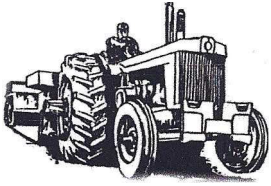


17th Annual

Richland Creek Antique Fall Festival



Sponsored by: *Richland Creek Antique Power Association*
Wendell Bedenbaugh, President

November 2, 3 & 4, 2012

Admission for Friday & Sunday \$5.00/Under 12 Free
Admission for Saturday \$10.00 for Adults/Under 12 Free
Hosted at: Richland Creek Farms - Saluda, South Carolina

Friday Antique Tractor Pull 7:00 p.m.

Saturday Antique Tractor Pull 1:00 p.m.

(Antique Tractors thru 1960 Only)

Opening Ceremony & Artillery Display Saturday 12:30 p.m.

Old Fashion Sunday Morning Service 10:00 a.m. at Richland Springs Baptist Church

Culpepper Artillery Battle on Sunday at 2 p.m.

Antique Engines

Antique Tractor Pull

Operator Steam Tractor

Threshing Machine

Craft Booths

Wagon Rides

Planer

Tractors From 1900 - 1960

Saw Mill & Big Engine

Kids Pedal Tractor Race

Kids Corn Shelling

Hay Baler

Shingle Mill

Antique Cars and Trucks

Border Collie Demonstrations featuring Hubert Bailey from Dawsonville, GA

Syrup Cooking - Blacksmith's Shop - Swap Meet

Crafts - Food

Camping Hookups

CONTACT:

John F. Berry, Event Coordinator (864) 445-2781

542 Richland Creek Road

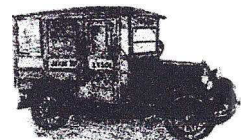
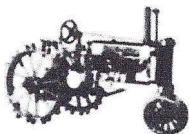
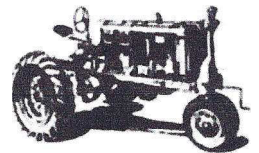
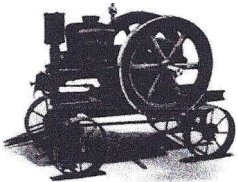
Ward, SC 29166

e-mail: jfberry@centurylink.net

or

Chad Berry, Event Chairman (864) 445-4684

e-mail: cberry15@windstream.net



www.richlandcreekantiques.com